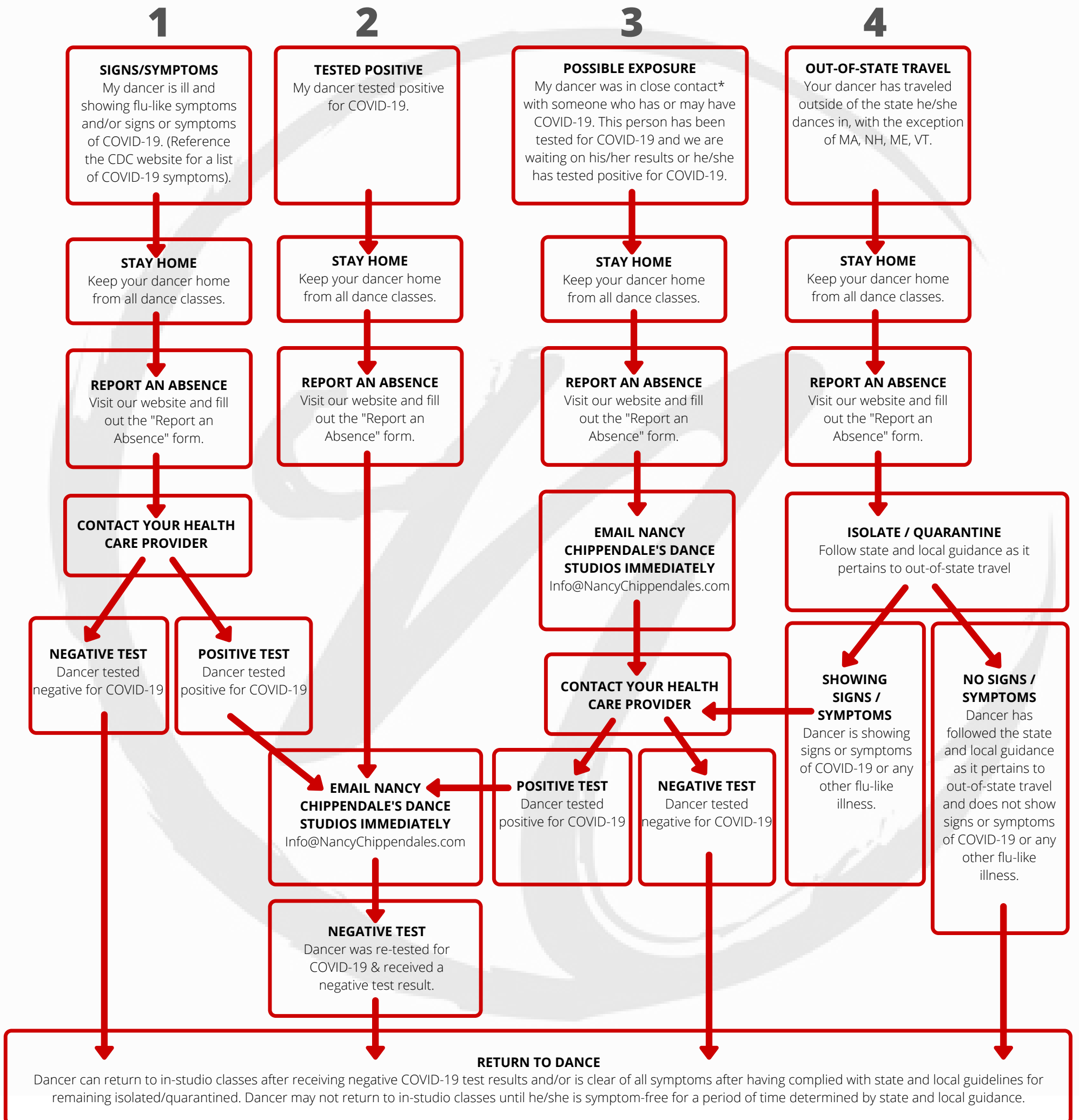


SAFETY TREE



What do I do in regards to dance participation if my dancer...

- 1) Is showing signs / symptoms of COVID-19
- 2) Has tested positive for COVID-19
- 3) Has potentially been exposed to COVID-19
- 4) Has traveled outside of the state in which they dance, with the exception of MA, NH, ME, VT.



*Close Contact is defined by the CDC as an individual who has had close contact (less than 6 feet) for greater than 15 minutes

OUR ROLE

If / When Nancy Chippendale's Dance Studios is notified of a potential exposure or positive test result, Nancy Chippendale's Dance Studios will coordinate with the local Board of Health to initiate and execute contact tracing and proceed with Board of Health Guidance. Please note that Nancy Chippendale's Dance Studios is committed to solutions that safe guard confidentiality.



For More Information Regarding Our COVID-19 Guidelines, Policies & Procedures

Visit: NancyChippendales.com/covid